

UNEMPLOYMENT INSURANCE STATISTICS

State of Oregon
EMPLOYMENT DEPARTMENT

UI Programs

Janet Orton

(503) 947-1679

janet.l.orton@state.or.us

www.WorkingInOregon.org

LABOR FORCE DATA		This Month	Last Month	Last Year
		Nov 2009	Oct 2009	Nov 2008
Oregon Civilian Labor Force		1,958,754	1,955,967	1,979,668
Total Number Unemployed		211,424	206,703	152,901

UNEMPLOYMENT RATES (CIVILIAN) (%)		Labor Force & Rate Data: www.QualityInfo.org		
Total Unemployment:	Oregon	10.8	10.6	7.7
	National	9.4	9.5	6.5
Seasonally Adjusted:	Oregon	11.1	11.2	7.8
	National	10.0	10.2	6.7

Week # :	52
Ending:	January 2, 2010

	THIS WEEK		LAST WEEK		This Month	Last Month	Last Year
	2009	2008	2009	2008	Dec 2009	Nov 2009	Dec 2008
UNEMPLOYMENT RATES (%)							
Insured Unemployment: Oregon	6.62	5.34	5.89	5.22	6.12	5.82	7.17
EB Trigger ¹	5.74	4.35	5.65	4.12			
Adjusted Insured Unemployment	8.02	5.21	7.92	4.98			
National Average TUR ²	11.20	7.20	11.20	7.20			
REGULAR CLAIMS (UI, UCFE, UCX)					This Month	Last Month	Last Year
					Dec 2009	Nov 2009	Dec 2008
Initial Claims (Excl. Liable)³	15,664	21,183	12,831	19,716	70,390	47,171	89,049
Oregon - New	5,359	8,727	5,148	9,107	29,002	18,549	42,970
Additional	9,845	11,956	7,135	10,145	38,872	26,469	43,853
Interstate - Agent	460	500	548	464	2,516	2,153	2,226
Interstate - Liable	257	305	229	313	1,543	1,176	1,579
Weeks Claimed (Excl. Liable)³	110,770	105,451	98,414	93,052	513,438	374,951	509,607
Oregon	105,616	102,436	93,608	89,776	487,349	357,477	492,408
Interstate - Agent	5,154	3,015	4,806	3,276	26,089	17,474	17,199
Interstate - Liable	3,567	3,051	3,345	2,573	17,141	13,199	13,426
New Combined Wage Claims	146	190	199	260	1,007	774	1,098
Non-monetary Determinations & Redeter.	1,909	1,541	2,233	2,703	12,058	11,116	12,672
PAYMENTS: REGULAR BENEFITS							
First Payments	7,128	7,396	5,126	6,199	28,673	18,874	39,936
Checks Issued	100,082	95,032	91,735	84,544	476,642	348,903	458,553
Gross Amount of Payments (\$) ^{3,5}	27,567,493	27,709,059	27,567,493	24,028,284	143,485,965	106,931,594	132,304,065
Regular Benefit Payments (\$)	29,801,245	27,709,059	25,407,068	24,028,284	132,287,916	98,739,883	132,304,065
Regular Federal Additional Compensation (\$) ⁴	2,357,150	0	2,160,425	0	11,198,049	8,191,711	0
Average Check Amount (\$) ^{3,5}	275.45	291.58	300.51	284.21	301.04	306.48	288.53
Number Exhausting Benefits	2,400	1,358	2,545	1,368	13,150	10,676	6,661
TRUST FUND							
Balance (in Millions) (\$)	\$ 1,035.49	\$ 1,972.00	\$ 1,064.96	\$ 2,001.00	\$ 1,035.49	\$ 1,169.17	\$ 1,971.51

¹ EB Trigger Graph: <http://www.employment.oregon.gov/EMPLOY/BUDGET/UI/current/IUR.pdf>

² NTUR: Unemployment Compensation Amendment of 1992 specifies that a 2 month average NTUR be used to determine duration levels.

³ Excludes WORKSHARE program

⁴ Federal Additional Compensation program start 3/2/2009 - Adds and additional \$25 to all claims

⁵ Includes FAC Payments

For current and historic UI reports, visit:

<http://www.oregon.gov/EMPLOY/BUDGET/UI/index.shtml>

Week # :	52
Ending:	January 2, 2010

	This Week	Last Week	Cumulative
EXTENDED BENEFITS (EB)			YTD
Initial Claims (Excl. Liable)	16	31	25,662
Weeks Claimed (Excl. Liable)	155	136	274,331
Gross Amount of Payments (\$) ⁵	10,998	9,580	94,744,420
EB Benefit Payments (\$)	10,273	8,805	87,462,445
EB Federal Additional Compensation (\$) ⁴	725	775	7,281,975
Number Exhausting Benefits	0	2	8,631

Oregon HEB Trigger "ON" 02/15/2009.

For a list of states ON EB, visit:

http://www.workforcesecurity.doleta.gov/unemploy/claims_arch.asp

Misc Additional Benefits (AB)			
Initial Claims (Excl. Liable)	5	19	163
Weeks Claimed (Excl. Liable)	114	142	2,449
Gross Amount of Payments (\$)	0	0	0
Number Exhausting Benefits	0	0	0

TRADE ADJUSTMENT ACT (TRA)			
Training Plans	57	0	1,992
Initial Claims	75	163	5,294
Weeks Claimed	1	1	1,644
Gross Amount of TRA Payments (\$) ⁵	129	129	622,254
TRA Benefit Payments (\$)	104	104	586,999
TRA Federal Additional Compensation (\$) ⁴	25	25	35,255
Certifications	0	0	55
Gross Amount of TAA Payments (\$)	0	356	87,376

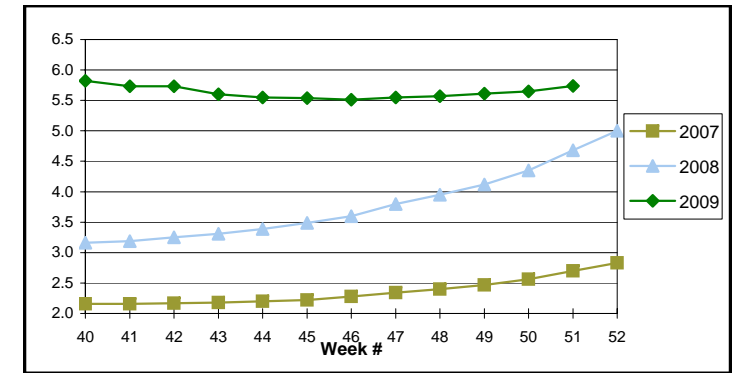
WORKSHARE PROGRAM (WS)			
Initial Claims	49	183	19,247
Weeks Claimed	3,989	4,290	242,376
Gross Amount of Payments (\$) ⁵	434,520	506,859	27,377,727
WS Benefit Payments (\$)	354,845	414,159	22,666,878
WS Federal Additional Compensation (\$) ⁴	79,675	92,700	4,710,849

TRAINING UI (TUI)			
Applications Accepted	72	155	9,072
Approved	68	154	8,155
Weeks Claimed	4,298	4,359	124,316
Gross Amount of Payments (\$) ⁵	1,465,898	1,489,918	44,037,385
TUI Benefit Payments (\$)	1,350,887	1,383,143	41,159,634
TUI Federal Additional Compensation (\$) ⁴	115,011	106,775	2,877,751

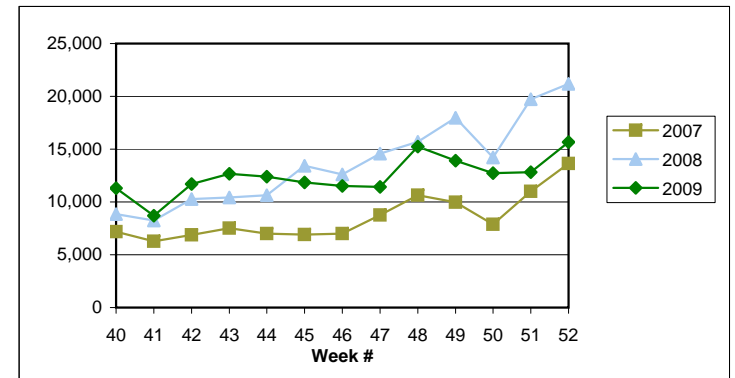
ECONOMICALLY DISTRESSED WORKER TRAINING			
Applications Approved	0	0	9
Weeks Claimed	0	3	17
Gross Amount of Payments (\$)	0	605	2,532

SUPPLEMENTAL UI for DISLOCATED WORKERS (S)			
Initial Claims	1	1	163
Weeks Claimed	11	11	828
Gross Amount of Payments (\$)	1,255	1,256	276,763

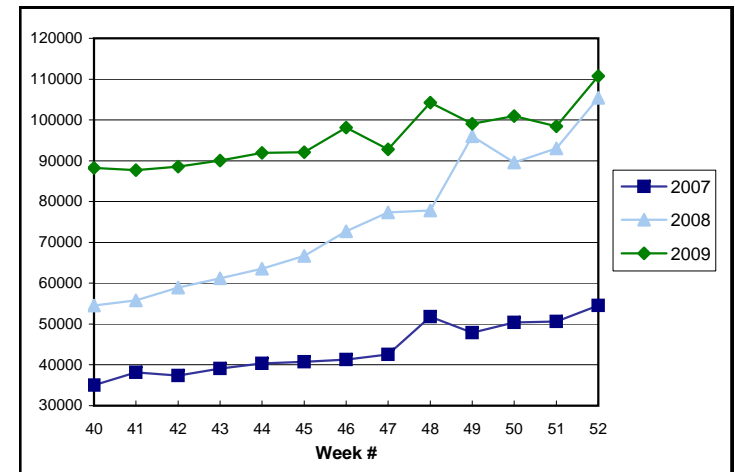
EB Trigger: 5.74



Regular Initial Claims: 15,664



Regular Weeks Claimed: 110,770



⁴ Federal Additional Compensation program start 3/2/2009 - Adds and additional \$25 to all claims

⁵ Includes FAC Payments

For current and historic UI reports, visit:



<http://www.oregon.gov/EMPLOY/BUDGET/UI/index.sht>



(503) 947-1679



janet.lorton@state.or.us

Week # : 52
Ending: January 2, 2010

This Week **Last Week** **Cumulative**
YTD

SELF EMPLOYMENT (SEA) MONTHLY ⁶		Nov '09	Cumulative
Referred		46	563
Enrolled		75	924
Completed		37	327
Weeks Claimed	167	856	10,110
Gross Amount of Payments (\$) ⁵	69,057	363,286	4,278,824
SEA Benefit Payments (\$)	65,082	342,961	4,055,893
SEA Federal Additional Compensation (\$) ⁴	3,975	20,325	222,931

⁶ These are MONTHLY counts; data in **BOLD** is weekly.

OREGON EXTENDED BENEFITS (OEB)

Initial Claims (Excl. Liabile)	98	87	10,221
Weeks Claimed (Excl. Liabile)	609	607	41,801
Gross Amount of Payments (\$)	67,037	66,575	10,388,047
Number Exhausting Benefits	109	114	2,037

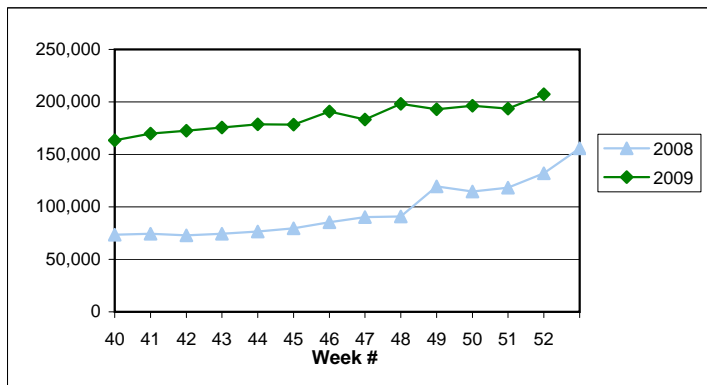
OEB Begins 10/04/2009

EMERGENCY UNEMPLOYMENT COMPENSATION 08 (EUC)

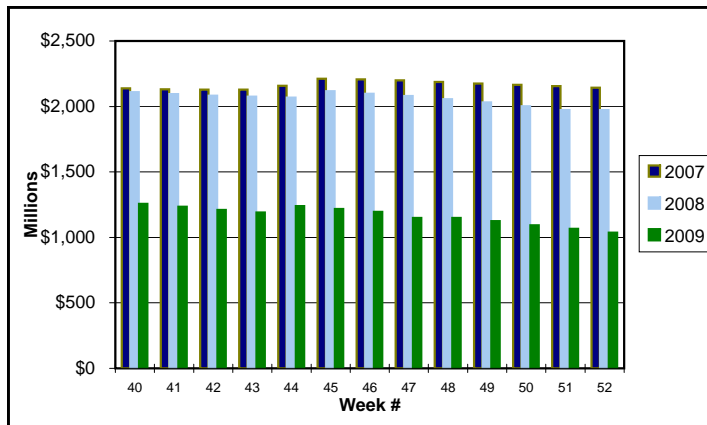
Initial Claims (Excl. Liabile)	2,947	2,567	154,355
Weeks Claimed (Excl. Liabile)	95,901	94,371	2,735,351
Gross Amount of Payments (\$) ⁵	32,011,020	31,511,696	898,780,619
EUC Benefit Payments (\$)	29,652,070	29,190,046	839,203,051
EUC Federal Additional Compensation (\$) ⁴	2,358,950	2,321,650	59,577,568
Number Exhausting <u>Tier 1 Benefits</u>	5,228	4,650	81,163
Number Exhausting <u>Tier 2 Benefits</u>	1,587	1,336	39,456
Number Exhausting <u>Tier Z Benefits</u> (14th week of Tier 2)	1,578	1,451	31,696
Number Exhausting <u>Tier 3 Benefits</u>	0	2	2
Number Exhausting <u>Tier 4 Benefits</u>	0	0	0

EUC begins 07/06/2008

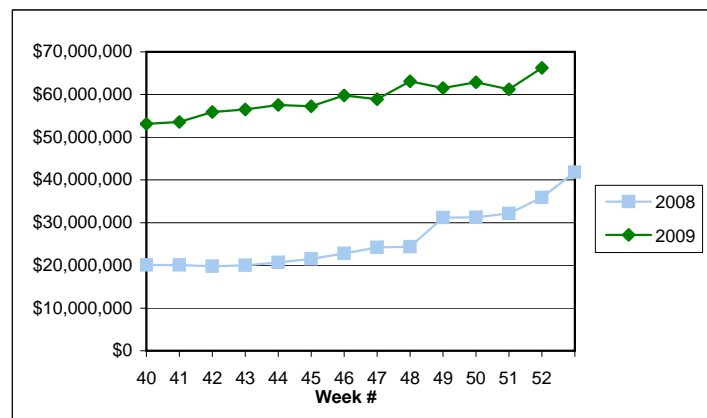
Total Weeks Claimed (Regular + EB + EUC + OEB): 207,435



Trust Fund Balance: \$1,035.49 (in millions)

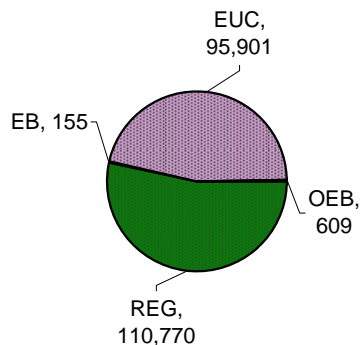
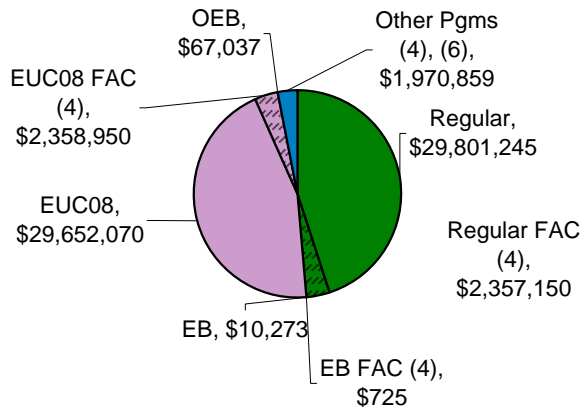


Total Benefits Paid: \$66,218,309 (4)



Benefits Paid By Program
Total Benefits Paid: \$66,218,309

Weeks Claimed - Program by Program
Total: 207,435



⁴ Federal Additional Compensation program start 3/2/2009 - Adds and additional \$25 to all claims

⁵ Includes FAC Payments

⁶ Other Programs Include AB, TRA, TAA, WS, TUI, SUD, SEA

For current and historic UI reports, visit:



<http://www.oregon.gov/EMPLOY/BUDGET/UI/index.shtm>



(503) 947-1679



janet.l.orton@state.or.us